



In any braking system, when a brake pad reaches its wear limit, a full brake service is required to ensure adequate vehicle safety.

WABCO now offers an early warning system in the form of a Continuous Wear Sensor (CWS) which continuously measures the wear of all pads.

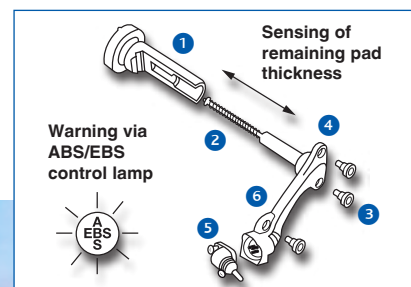
Benefits

- Reduced service costs and down times via control of the remaining thickness of all wheel pads
- Integrated pad wear indication (BVA) function
- Integrated logic anti-signal failure
- Redundant sealing to the brake caliper for protection against water ingress
- Micro encapsulated fixation bolts (loss protection)
- Designed for 1.5 million km

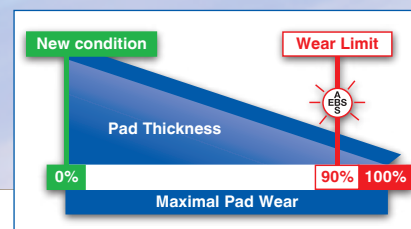
An added bonus

- The Continuous Wear Sensor (CWS) is simply exchangeable without further adjustments – (Plug and Play)

WABCO



- 1 Adjuster bolt
- 2 Pressure spring guided sensor tappet made of stainless steel
- 3 Loss protected fixation bolts
- 4 Redundant sealing to brake caliper
- 5 Robust external connector
- 6 Each sensor exchangeable without further adjustments (Plug and Play)



With a Continuous Wear Sensor brake servicing can be more easily anticipated and therefore more efficiently planned. Wasteful 'downtimes' are greatly reduced, and safety and security are greatly enhanced.

In combination with EBS, the analogue sensor balances the wear process across all axles and wheels of a truck or bus, by controlling the pressure of the different axles and determining the brake pad thickness of all the wheels. This way all pads can be worn to the same degree at the same time.

This results in wear synchronisation up to the pads' end-of-life and substantially reduces the number of visits to the workshop.

When the defined pad rest thickness is reached, the CWS provides a signal to the ABS/EBS warning light

on the dashboard, informing the driver that a brake service is due.

The sensor tappet is located in the sealed internal area of the disc brake and detects the distance covered by the adjustment bolt. This corresponds to the wear of both the brake pad and the brake disc.

Integrated into this sensor is the brake pad wear indicator function (BVA) which indicates that the wear limit is reached via the ABS/EBS control light.

The CWS can be easily connected with a three-core BVA line to the respective EBS components.

An added bonus: The Continuous Wear Sensor (CWS) is simply exchangeable without further adjustments – (Plug and Play).

Technical Characteristics

- Electromagnetic compatibility according to DIN ISO 11452-4
- Low weight of 0,054 kg per sensor
- Dissolution accuracy 0,1 mm
- Water and steam resistant external connector suitable for most applications
- Suitable for operating temperatures of minus 40 °C to 100 °C
- Pressure spring guided sensor tappet made of stainless steel
- Proven potentiometric sensing method