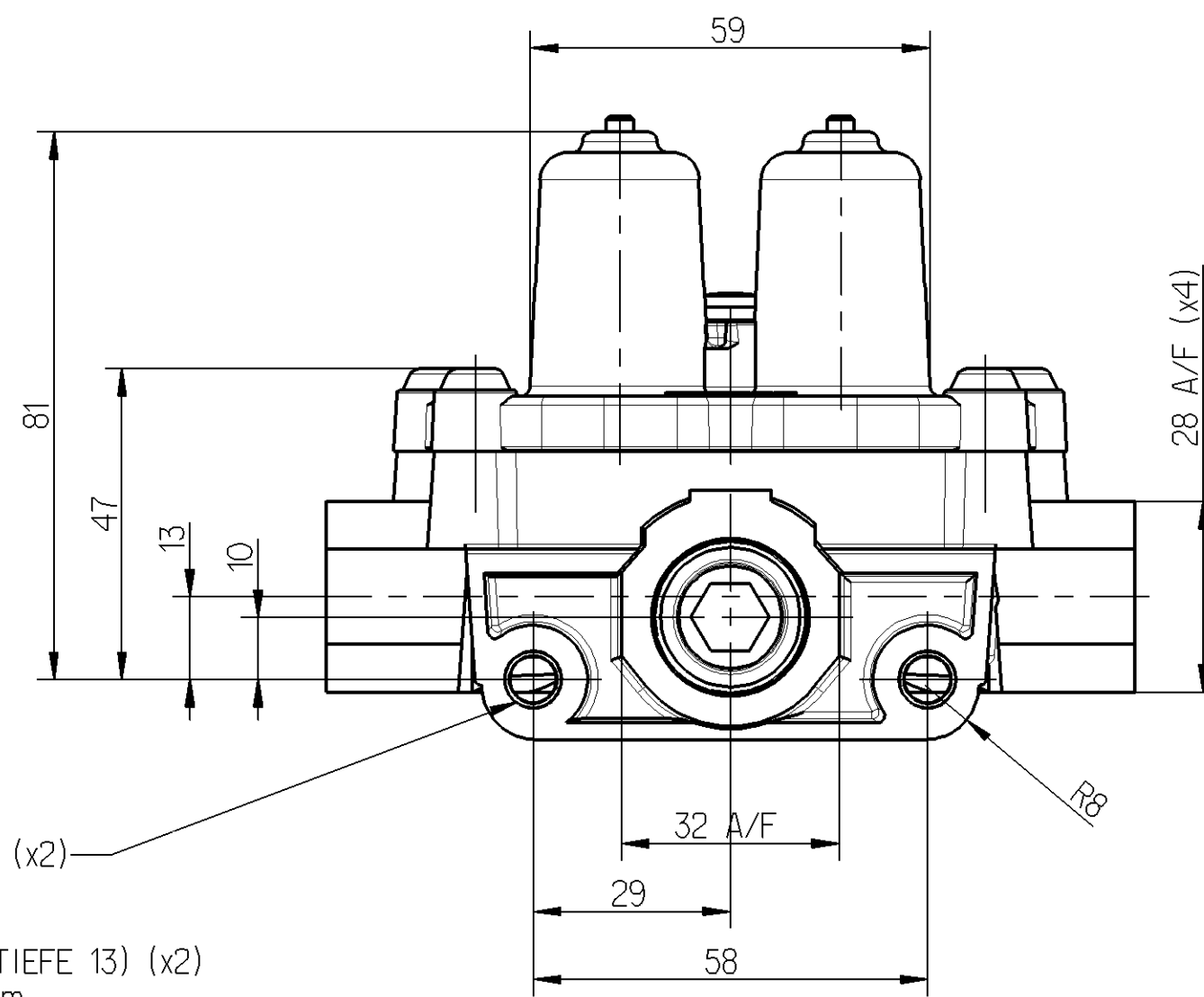
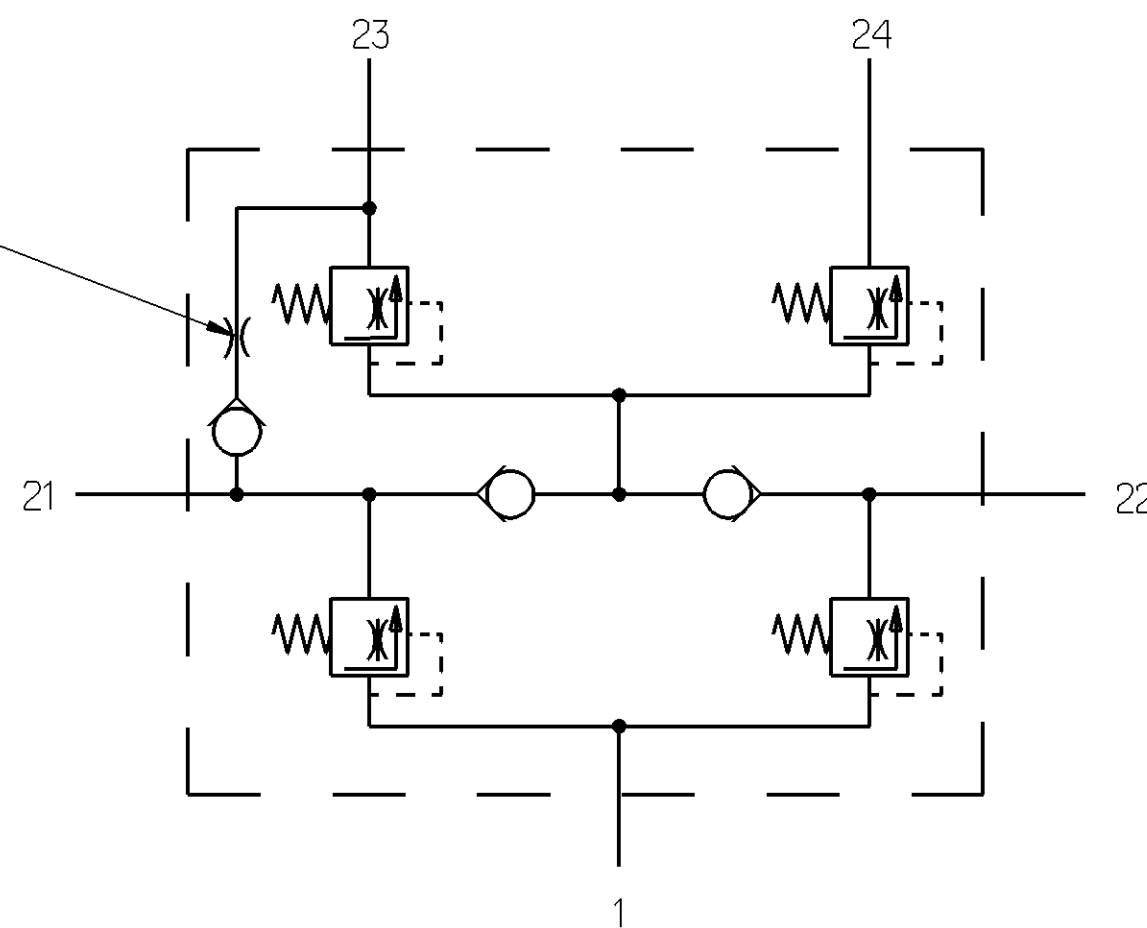
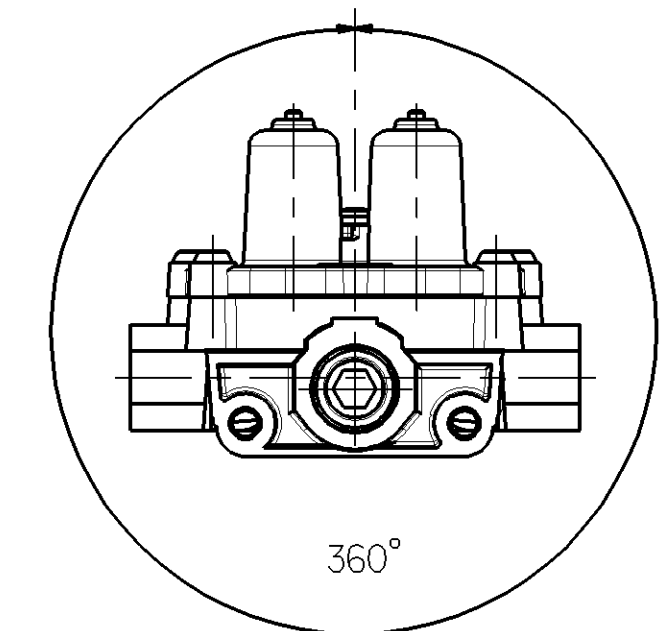


- # FLOW RATE = 16-35 l/min
AT P23 = 8, P21 = 0 bar
WHEN P21 DROPS TO ZERO
RETAINED P23 = 1bar MAX
- # DURCHFLOßMENG E = 16-35 l/min
BEI P23 = 8, P21 = 0 bar
WENN P21 AUF NULL ABFALLT
GESICHERTER DRUCK P23 = 1bar MAX
- # DEBIT = 16-35 l/min
SCUS P23 = 8, P21 = 0 bar
SI P21 TOMBE A ZERO
LA PRESSION MAINTENUE A P23 = 1bar MAX
- # PORTATA = 16-35 l/min
PER P23 = 8, P21 = 0 bar
SE P21 CALCA A ZERO
LA PRESSIONE MANTENUTA A P23 = 1bar MAX



- M8x1.25 THRO'(13 DEEP) (x2)
TORQUE 25-30 Nm
- M8x1.25 DURCHGEHEND (TIEFE 13) (x2)
ANZUGSMOMENT 25-30 Nm
- M8x1.25 FILET (PROFONDEUR 13) (x2)
COUPLE DE SERRAGE 25-30 Nm
- M8x1.25 ATTRAVERSO (PROFONDITA 13) (x2)
COPPIA DI SERRAGGIO 25-30 Nm

SCALE
MASSTAB
ECHELLE
SCALA
1:2



CORROSION PROTECTION
ALUMINIUM PARTS CHROMATED
TO JED-259
SCREWS MECHANICALLY ZINC
PLATED TO JED-256-1

KORROSIONSSCHUTZ
ALUMINIUMTEILE CHROMIERT
GEMASS JED-259
SCHRAUBEN MECHANISCH VERZINKT
GEMASS JED-256-1

PROTECTION ANTICORROSIVE
PIECES ALUMINIUM CHROMEES
POUR JED-259
VIS MECANIQUEMENT ZINGUEES
POUR JED-256-1

PROTEZIONE ANTICORROSIONE
PEZZI IN ALUMINIO CROMATI
PER JED-259
VITI MECCANICAMENTE ZINCATE E
PER JED-256-1

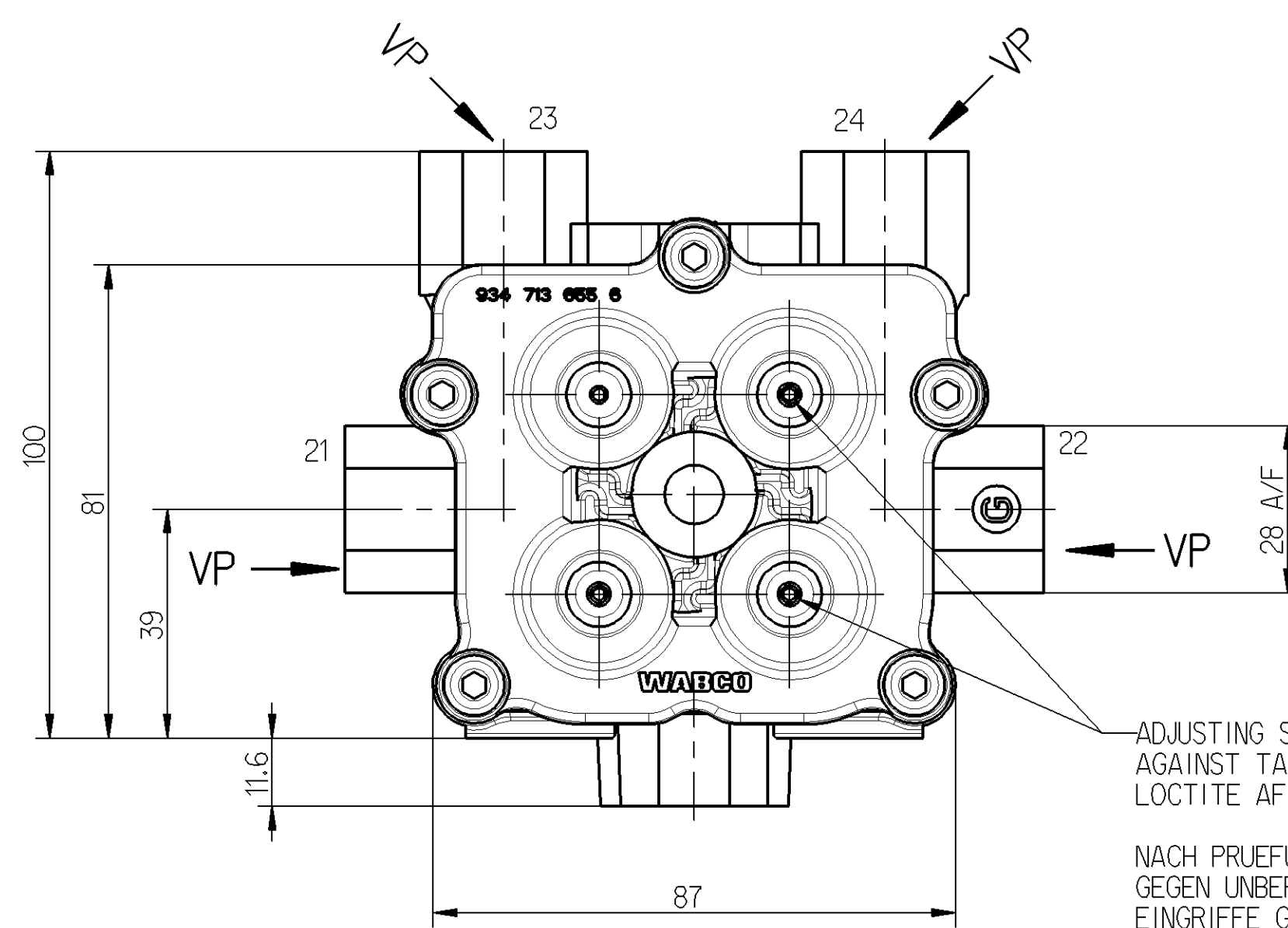
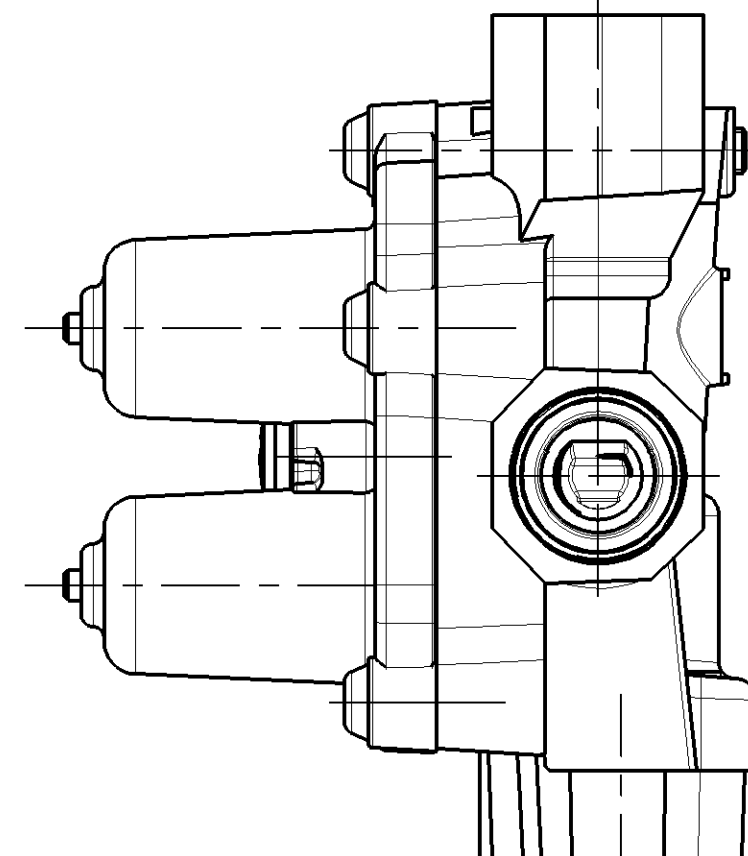
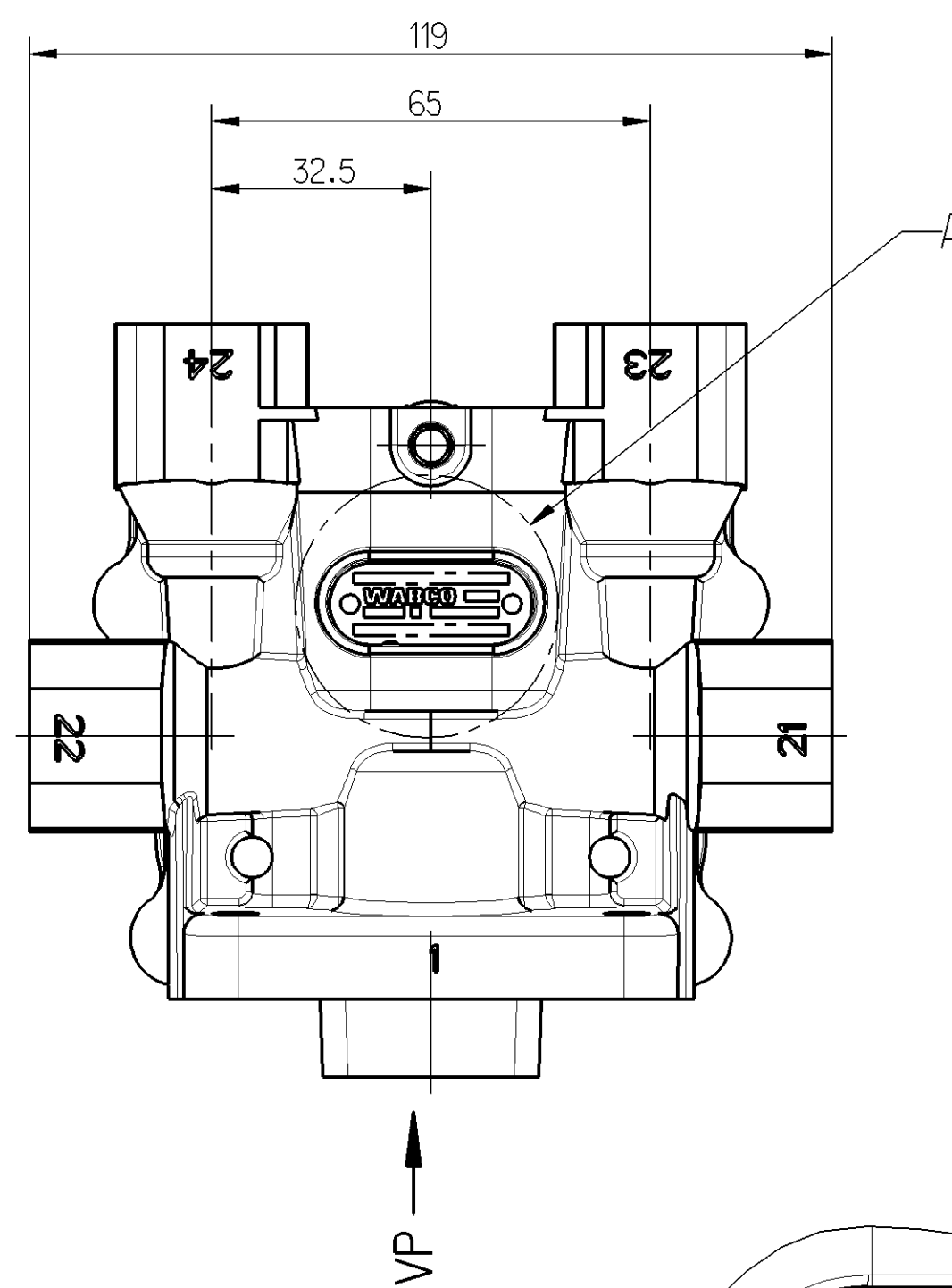
CONNECTIONS
ANSCHLUESSE
ORIFICES
ORIFIZI

SUPPLY
LUFTEINTRITT
ALIMENTATION
ALIMENTAZIONE

| | | |
|-----|------------------------------------|------------------------------------|
| | CIRCUIT 1 KREIS 1 CIRCUITO 1 | CIRCUIT 2 KREIS 2 CIRCUITO 2 |
| 21- | CIRCUIT 1 CIRCUITO 1 | 22- CIRCUIT 2 CIRCUITO 2 |
| | CIRCUIT 3 KREIS 3 CIRCUITO 3 | CIRCUIT 4 KREIS 4 CIRCUITO 4 |
| 23- | CIRCUIT 3 CIRCUITO 3 | 24- CIRCUIT 4 CIRCUITO 4 |

VALVE MAY BE MOUNTED AT ANY ANGLE
VENTIL KANN IN BELIEBIGER LAGE MONTIER WERDEN
LA SOUPAPE PEUT ETRE INSTALLE A N'IMPORTE QUEL ANGLE
VALVOLA MONTABILE A QUALSIASI ANGOLO

- * OPENING PRESSURE 23 TO EXCEED HIGHEST ACTUAL OPENING PRESSURE OF OTHER CIRCUITS BY >=0.1 BAR. REFER TO DOC. CODE 435
- * DER OEFFNUNGSDRUCK DES KREISES 23 MUSS IMMER UM >=0.1 BAR UEBER DEM HOECHSTEN IST-OEFFNUNGSDRUCK DER ANDEREN KRIESE LIEGEN. SIEHE DOC. 435
- * LA PRESSION D'OUVERTURE DU CIRCUIT 23 DOIT TOUJOURS EXCEDER LA PLUS HAUT PRESSION D'OUVERTURE DES AUTRES CIRCUITS DE >=0.1 BAR. VOIR DOC. 435
- * LA PRESSIONE DI APERTURA DEL CIRCUITO 23 DEVE SEMPRE SUPERARE LA PIU ALTA PRESSIONE DI APERTURA DEGLI ALTRI CIRCUITI. VEDERE DOC. 435



ADJUSTING SCREWS SECURED AGAINST TAMPERING WITH LOCTITE AFTER TEST

NACH PRUEFUNG MIT LOCTITE GEGEN UNBEFUGTE EINGRIFFE GESICHERT

VIS DE REGLAGE FIXEES AVEC LOCTITE PAR SECURITE APRES ESSAI

VITI DI REGOLAZIONE FISSATE CON LOCTITE DOPO LE PROVE

LABEL MARKED WITH:-

- CUSTOMER NUMBER
- PRODUCTION PLANT
- DATE OF MANUFACTURE
- OPTIONAL
- WABCO IDENTIFICATION NUMBER

SCHILD MIT AUFSCHRIFT:-

- KUNDEN-NR.
- FERTIGUNGSWERK
- HERSTELLDATUM
- BELIEBIG
- WABCO IDENTIFIKATIONS-NUMMER

ETIQUETTE COMPORTANT:-

- NO CLIENT
- USINE DE PRODUCTION
- DATE DE FABRICATION
- A VOLONTE
- WABCO NUMERO D'IDENTIFICATION

ETICHETTA CONTRASSEGATA CON:-

- NO CLIENTE
- STABILIMENTO DI PRODUZIONE
- DATA DI FABRIZIONE
- A SCELTA
- WABCO NUMERO D'IDENTIFICAZIONE

ADMISSIBLE TEMPERATURES = -40°C / +90°C
THERMISCHER ANWENDUNGSBEREICH
TEMPERATURE DE SERVICE
TEMPERATURA D'ESERCIZIO

MEDIUM : ARIA
MEDIUM : AIR
FLUIDE : LUFT
FLUIDO : ARIA

SERVICE PRESSURE = 13 bar MAX.
BETRIEBSDRUCK
PRESSION DE SERVICE
PRESSIONE D'ESERCIZIO

JED-388-0-M22x1.5 VOSS SYSTEM 230,
TORQUE 35 Nm MAX.

JED-388-0-M22x1.5 VOSS SYSTEM 230,
ANZUGSMOMENT 35 Nm MAX.

JED-388-0-M22x1.5 VOSS SYSTEM 230,
COUPLE DE SERRAGE 35 Nm MAX.

JED-388-0-M22x1.5 VOSS SYSTEM 230,
COPPIA DI SERRAGGIO 35 Nm MAX.

VP =

| PORTS ORIFICES | ANSCHLUESSE ATTACCHI | 21 | 22 | 23 | 24 |
|--|----------------------|-------------------------------------|-------------------------------------|-------------------------------------|-------------------------------------|
| OPENING PRESSURE DYNAMIC OEFFNUNGSDRUCK DYNAMISCH PRESSION DE OUVERTURE DYNAM PRESSIONE DI APERTURA DINAM | BAR | 6.9 ⁺⁰ / _{-0.3} | 6.9 ⁺⁰ / _{-0.3} | 7.0 ⁺⁰ / _{-0.3} | 6.9 ⁺⁰ / _{-0.3} |
| CLOSING PRESSURE DYNAMIC SCHLISSDRUCK DYNAMISCH PRESSION DE FERMETURE DYNAM PRESSIONE DI CHIUSURA DINAM | BAR | > 5.0 | | | |
| CLOSING PRESSURE STATIC AT FAILURE OF CIRCUIT... SCHLISSDRUCK STATISCH BEI AUSFALL VON KREIS... PRESSION DE FERMETURE STATIQUE EN CAS DE DEFAILLANCE DU CIRCUIT... PRESSIONE DI CHIUSURA STATICA IN CASO DI DIFETTO DEL CIRCUITO... | BAR | 0 | > 4.5 | # | > 4.5 |
| | | > 4.5 | 0 | > 4.5 | > 4.5 |
| | | > 4.5 | > 4.5 | 0 | > 4.5 |
| | | > 4.5 | > 4.5 | > 4.5 | 0 |

| | | | |
|--|-----------|---|-------------------|
| General Specification: JED-334-0 | | Copyright WABCO | |
| Further Technical Data: | | Date | Signature |
| Doc. Code: | Sheet: To | 2006-07-04 | Kalirka |
| General Tolerances JED-261 | | Checked | 2006-08-01 |
| Range of Nominal Dimensions (± mm) | | Expert | Mach |
| Class | 1) ≤ 50 | > 50 > 180 | > 180 > 400 |
| Fine | 0.5 | 1.0 | 1.5 |
| Medium | X 1.0 | 2.0 | 3.0 |
| Coarse | 2.0 | 3.5 | 5.0 |
| | | | 6.5 |
| | | | ± 3° |
| 12958 | 1A | 2007-04-05 | |
| DDN-No. | Rev. | Date | State of Revision |
| Tapped Holes acc. JED-152 | | Mass | Scale |
| 1) Tolerance Class Applied Crossmarked | | 1.2 | 1:1 |
| | | Size | TR1 |
| | | A 1 | 510 |
| | | Material No. 934 714 400 0 | |
| | | WABCO IS. No.: 9347144000 | |
| | | Doc. Code Language Sheet | |
| | | 605 en/99 1/1 | |
| | | Function Code CAD System Prod. Type Replacement for | |
| | | Pro/E 0 0 X | |

Non e permesso copiare o tradurre questo documento, ne utilizzare il contenuto o riferirsi a terzi senza permesso scritto dalla WABCO. Toute reproduction ou traduction de ce document, toute exploitation ou communication de son contenu sans autorisation de la WABCO est formellement interdite. Toute utilisation non autorisee de ce document est formellement interdite. All rights reserved. No part of this document may be reproduced, stored in a retrieval system, or transmitted, in any form or by any means, electronic, mechanical, photocopying, recording, or by any information storage and retrieval system, without the prior written permission of WABCO.